



## INSTALLATION INSTRUCTIONS

### COMPATIBILITY TO THE MOST COMMON RESIDENTIAL SERIES PLATES

#### CONTENT OF PACKAGING

- n° 1 Electronic recessed device 3 modules
- n° 1 T6 model sub-frame
- n° 2 screws for fastening the sub-frame to the wall-mounted recess box (ex.: type 503)
- n° 1 Front + handle (only for thermostat) with WHITE EMBOSSED finishing
- n° 1 Front + handle (only for thermostat) with BLACK EMBOSSED finishing
- n° 1 Adapter compatible with the VIMAR LINEA series
- n° 1 Frame compatible with the VIMAR LINEA series EMBOSSED BLACK finishing
- n° 1 Frame compatible with the VIMAR LINEA series EMBOSSED WHITE finishing

#### Compatibility to the most common residential series plates

The trademarks ARKÉ, EIKON, PLANA, LINEA are property of VIMAR SpA company  
The trademarks LIVING, LIGHT, LIVINGLIGHT, MATIX GO are property of BTICINO SpA company

To check ALL possible compatibility of the device with the most widespread civil series (even with optional accessories) frame the QR CODE

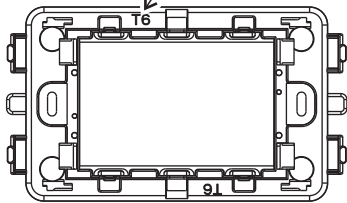


or click to the following link:

<https://www.perry.it/qrcode/Compatibilita2024ProdottiIncastoSerieCivili.html>

#### SET-UP OF SUB-FRAME (T6) BASED ON THE PLATE USED

##### Sub-frame T6

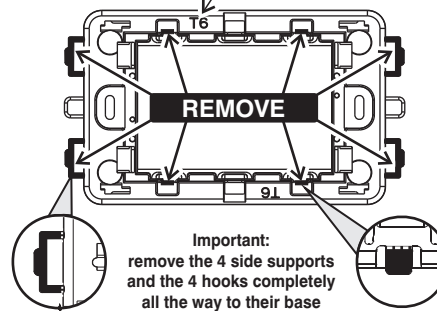


Sub-frame without any change

For plates of the series VIMAR:

- ARKÉ
- EIKON
- PLANA

##### Sub-frame T6



**Important:**  
remove the 4 side supports and the 4 hooks completely all the way to their base

For plates of the series BTICINO:

- LIVING
- LIGHT
- LIVINGLIGHT
- MATIX GO

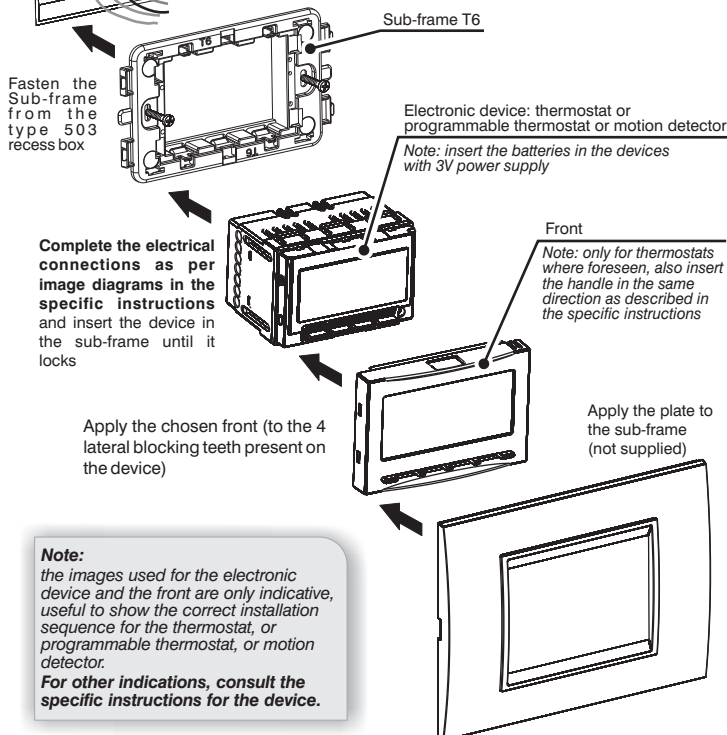
**Note for the installer:** with BTICINO Living, Light, Livinglight series plates, if they are already present on the recess box and respective BTICINO frames, it is possible to insert the electronic device directly in these frames.

#### ASSEMBLY OF THE ELECTRONIC DEVICE BASED ON THE PLATE USED

**Attention:** before installing the electronic device, deactivate the 230V~ mains voltage

**Important:** plate seal on the sub-frame of the electronic device is only guaranteed through a correct installation of the 503 recess box (set flush in the wall without imperfections).

Recessed box (type 503)

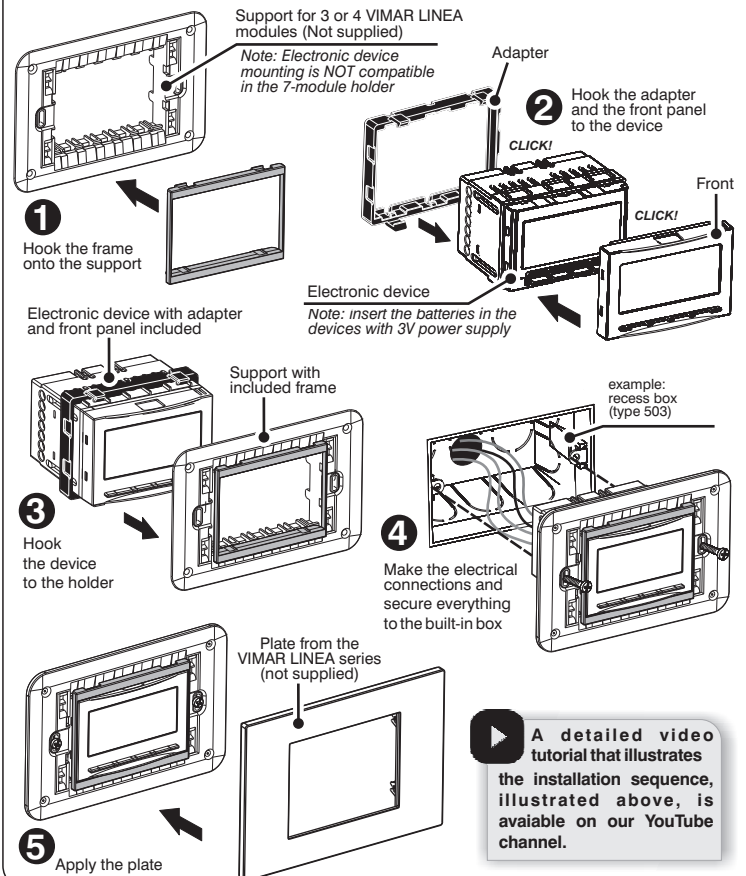


#### ASSEMBLY OF THE ELECTRONIC DEVICE ONLY WITH LINEA SERIES VIMAR PLATES

**Attention:** before installing the electronic device, deactivate the 230V~ mains voltage

Support for 3 or 4 VIMAR LINEA modules (Not supplied)

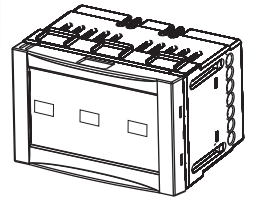
*Note: Electronic device mounting is NOT compatible in the 7-module holder*





# INSTALLATION INSTRUCTIONS

## COMPATIBILITY TO THE MOST COMMON RESIDENTIAL SERIES PLATES ONLY FOR EMERGENCY LAMP



### CONTENT OF PACKAGING

- n° 1 Recessed Emergency lamp 3 modules
- n° 1 T6 model sub-frame
- n° 2 screws for fastening the sub-frame to the wall-mounted recess box (ex.: type 503)
- n° 1 Front with WHITE EMBOSSED finishing
- n° 1 Front with BALCK EMBOSSED finishing
- n° 1 Adapter compatible with the VIMAR LINEA series
- n° 1 Frame compatible with the VIMAR LINEA series EMBOSSED BLACK finishing
- n° 1 Frame compatible with the VIMAR LINEA series EMBOSSED WHITE finishing
- n° 1 Lamp module anti-extraction block (must be entered)

Use and installation instructions

Compatibility to the most common residential series plates  
and of the mounting of the anti-extraction block

The trademarks ARKÉ, EIKON, PLANA, LINEA are property of VIMAR SpA company  
The trademarks LIVING, LIGHT, LIVINGLIGHT, MATIX GO are property of BTICINO SpA company

To check ALL possible compatibility of the device with the most widespread civil series (even with optional accessories) frame the QR CODE

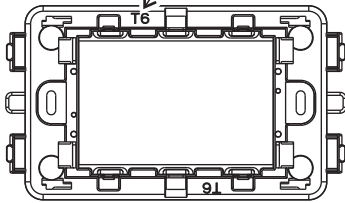


or click to the following link:

<https://www.pery.it/qrcode/Compatibilita2024ProdottiIncastoSerieCivili.html>

### SET-UP OF SUB-FRAME (T6) BASED ON THE PLATE USED

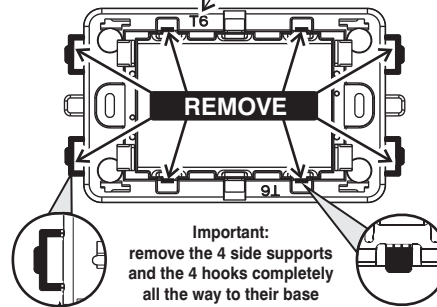
Sub-frame T6



Sub-frame without any change

For plates of the series VIMAR:  
• ARKÉ  
• EIKON  
• PLANA

Sub-frame T6



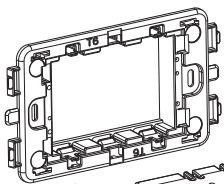
Important:  
remove the 4 side supports and the 4 hooks completely all the way to their base

For plates of the series BTICINO:

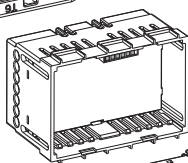
- LIVING
- LIGHT
- LIVINGLIGHT
- MATIX GO

Note for the installer: with BTICINO Living, Light, Livinglight series plates, if they are already present on the recess box and respective BTICINO frames, it is possible to insert the electronic device directly in these frames.

### ASSEMBLY SEQUENCE OF THE ELECTRONIC DEVICE BASED ON THE PLATE USED

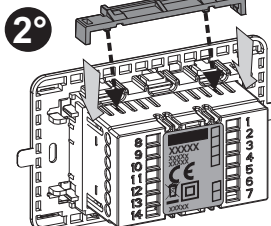


1°

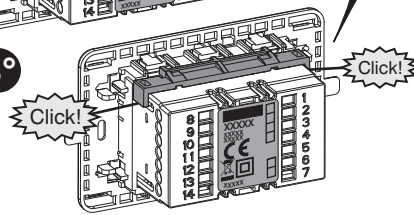


Take note of the installation date on the battery pack and insert it respecting the polarity (+)

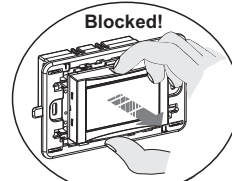
⚠ ATTENTION!  
MUST INSERT THE ANTI-EXTRACTION BLOCK



3°



Blocked!

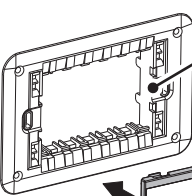


Attention:  
before the electrical connections of the electronic device, deactivate the 230V~ mains voltage

4°

Apply the plate to the sub-frame (not supplied)

### ASSEMBLY SEQUENCE OF THE ELECTRONIC DEVICE ONLY WITH LINEA SERIES VIMAR PLATES

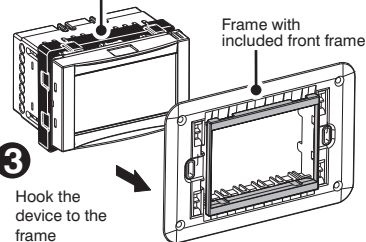


1 Hook the frame to the frame

VIMAR LINEA 3 or 4 module frame (Not supplied)

Note: Electronic device mounting is NOT compatible in the 7-module holder

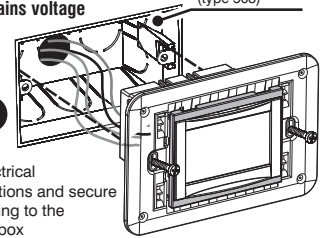
Electronic device - with adapter and front panel included



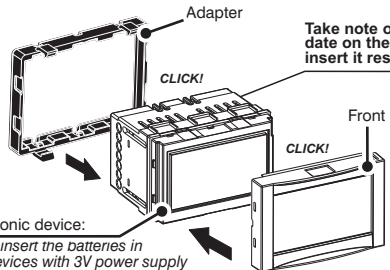
3 Hook the device to the frame

⚠ Attention: before the electrical connections of the electronic device, deactivate the 230V~ mains voltage

Recessed box (type 503)



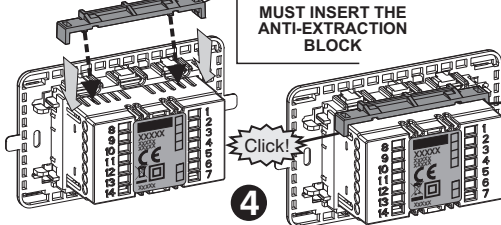
5 Make the electrical connections and secure everything to the built-in box



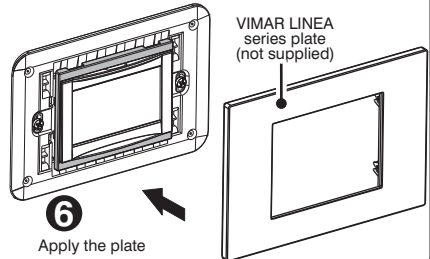
2 Hook the adapter and the front panel to the device

Take note of the installation date on the battery pack and insert it respecting the polarity (+)

⚠ ATTENTION!  
MUST INSERT THE ANTI-EXTRACTION BLOCK



4



6 Apply the plate

VIMAR LINEA series plate (not supplied)

Electronic device:  
Note: insert the batteries in the devices with 3V power supply